

CUSD



Sample Assessment

August 23, 2013

This Sample Assessment includes a sample of the expanded Assessment information for the following schools: (all schools available upon request)

- ☐ Chapman Elementary School
- ☐ Marsh Junior High School
- ☐ Chico High School

The Following Considerations were made during each School's site and building assessment:

- ☐ Building assessments scores assume all current construction projects are complete
- ☐ All scores at Inspire will be adjusted after construction is complete
- ☐ Site scores at Chico High will be adjusted after construction is complete
- ☐ Site scores at Pleasant Valley High will be adjusted after construction is complete
- ☐ Final Educational Specifications/Standards may affect final educational program scores

The following scale was used as a rating system while evaluating the Education Program and Building/Site Conditions at each school site:

Education Program

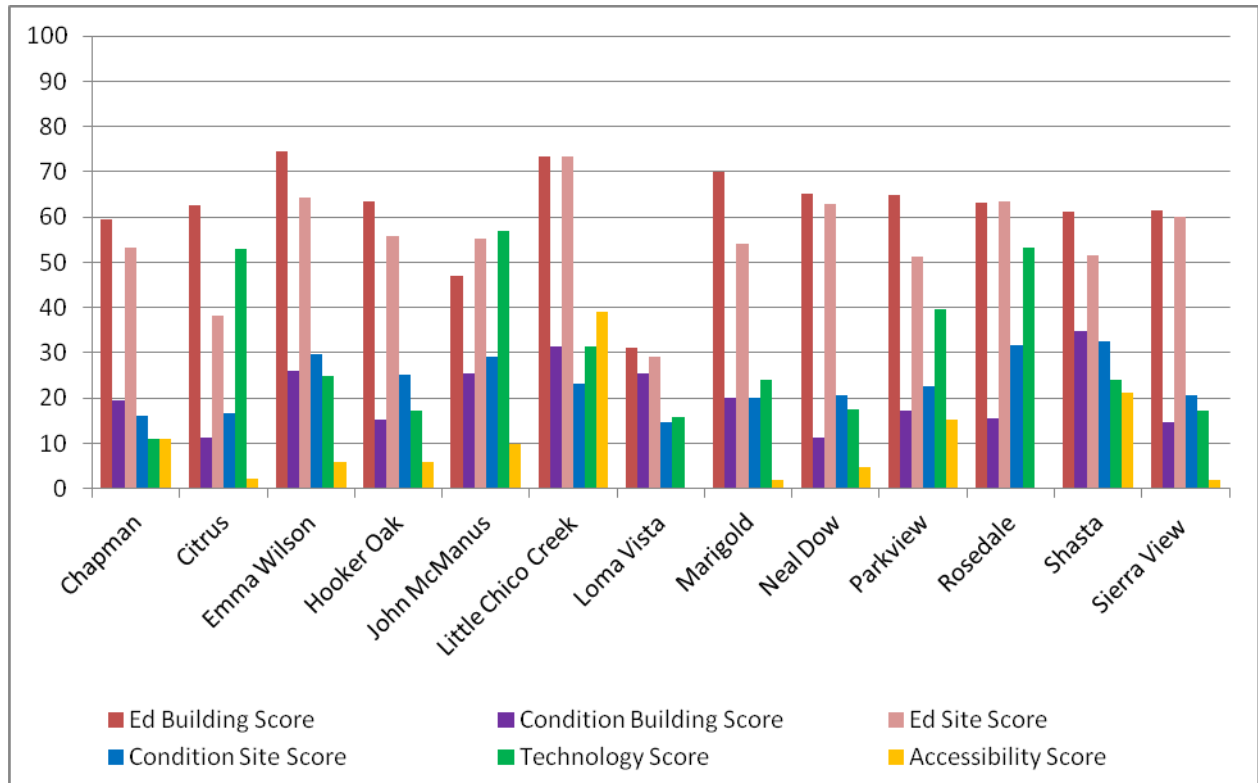
- 5 - above standard
- 4 - at standard
- 3 - slightly below standard
- 2 - below standard
- 1 - well below standard or missing
- n - not applicable

Condition

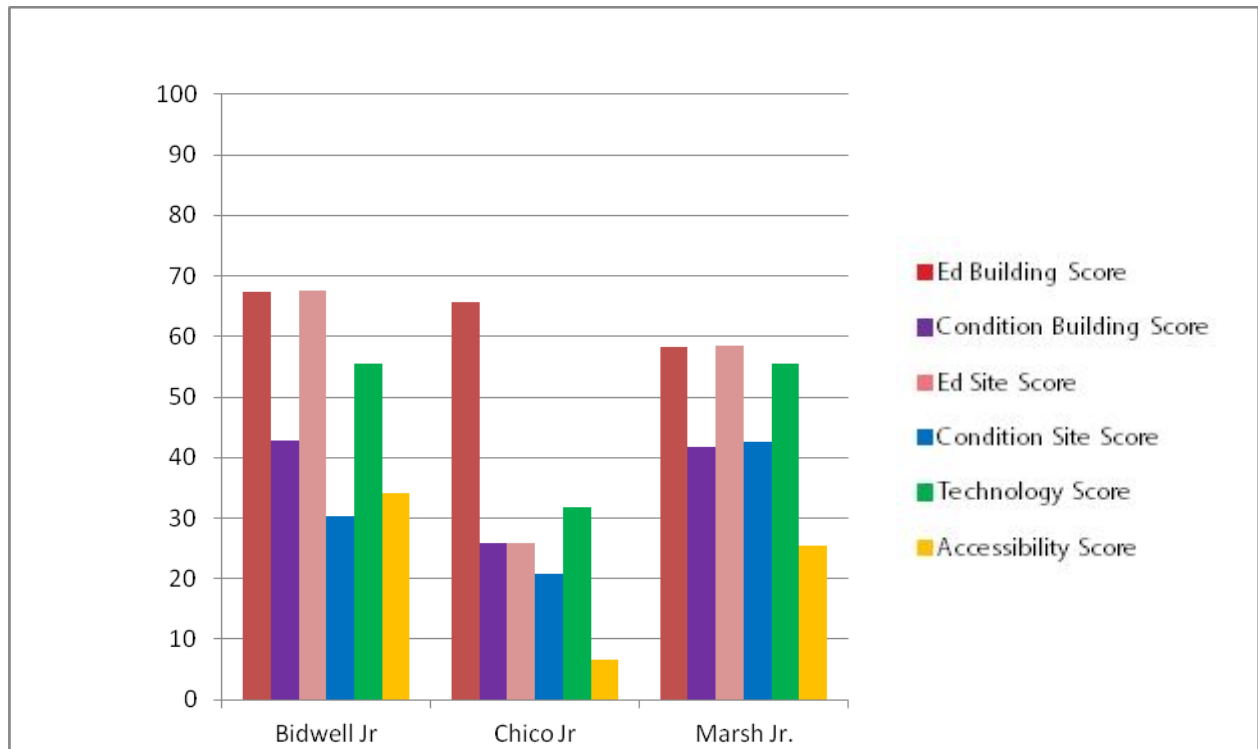
- 5 - new or like new
- 4 - good condition
- 3 - serviceable condition
- 2 - poor condition
- 1 - very poor condition or missing
- n - not applicable

Each individual score is based on a 100 point scale correlating to the percent of the points earned to the total points available for each category

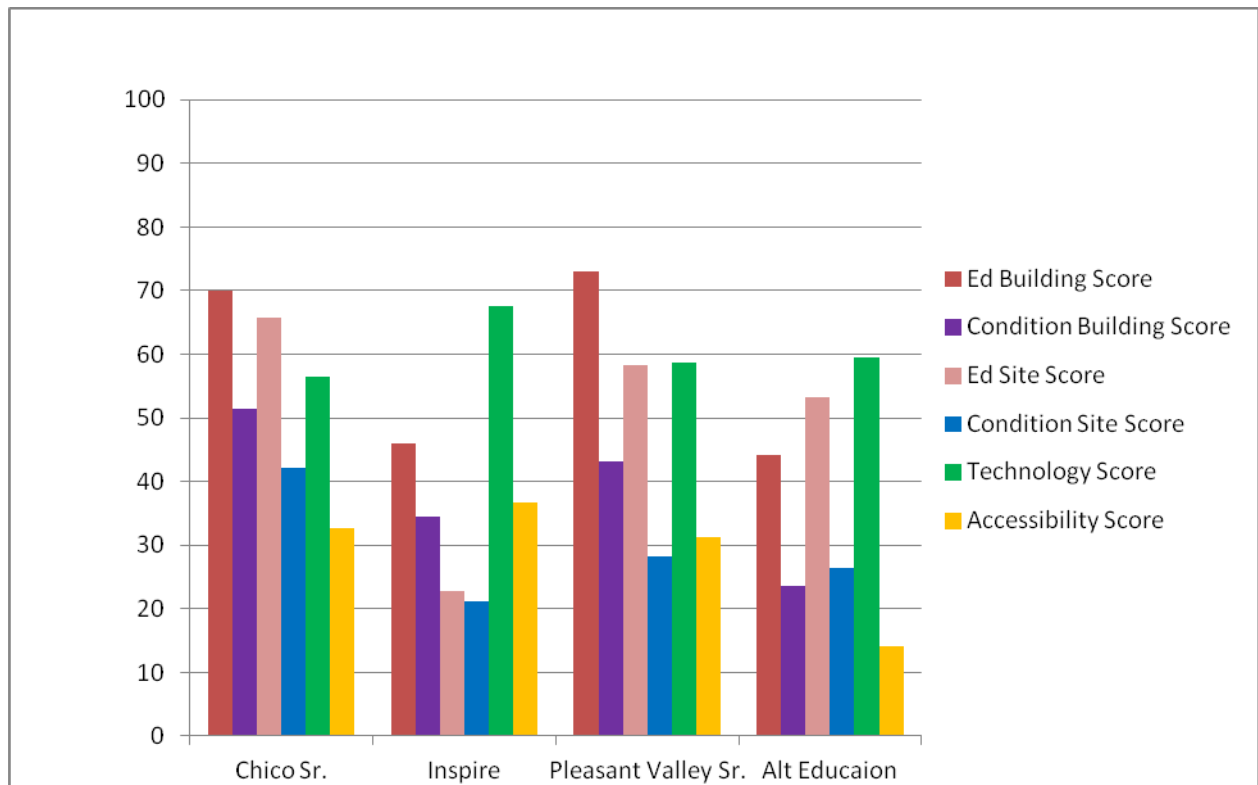
Elementary School Assessment Summary



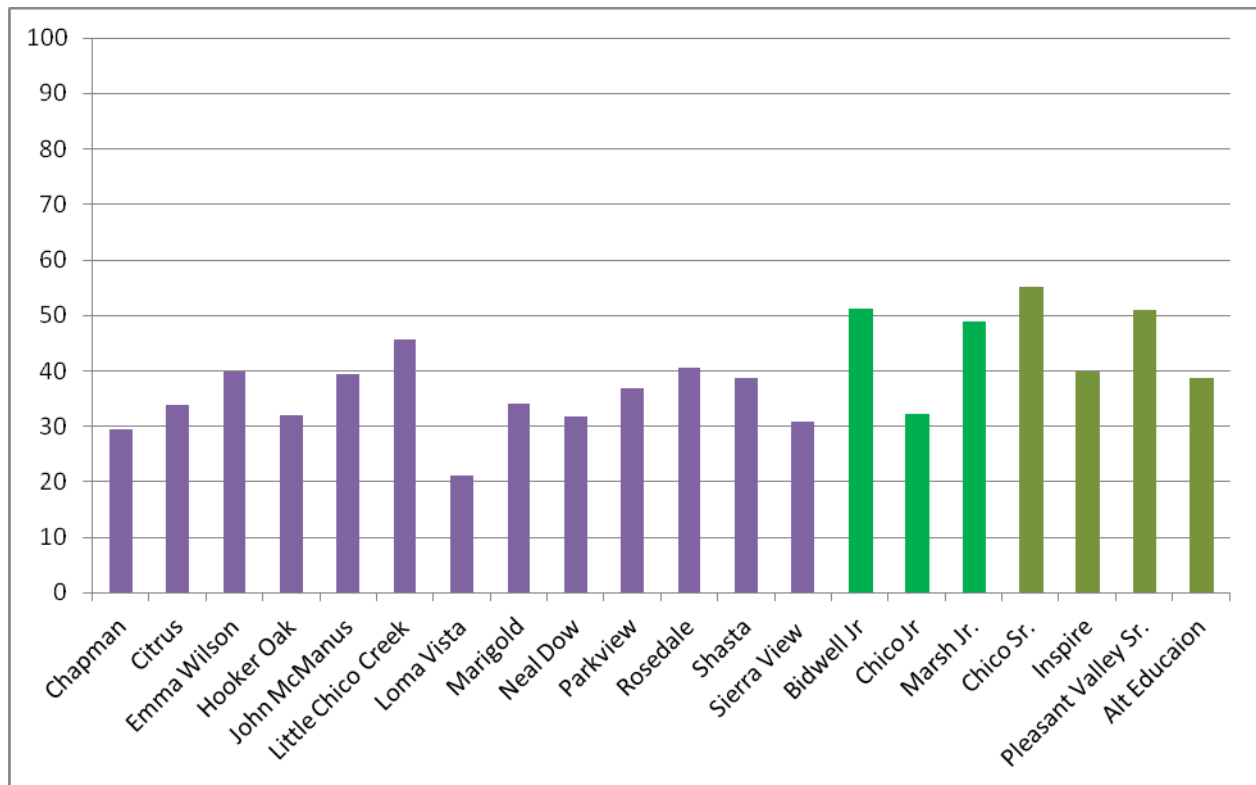
Junior High School Assessment Summary



High School Assessment Summary



All Schools Combined Assessment Summary



The combined scores are a weighted average of all the assessment scores for each school. The weighting is as follows:

Educational Program-Building: 20%

Condition-Building: 20%

Educational Program- Site: 15%

Condition-Site:15%

Technology: 20%

Accessibility: 10%

Educational Program Assessment - reoccurring needs:

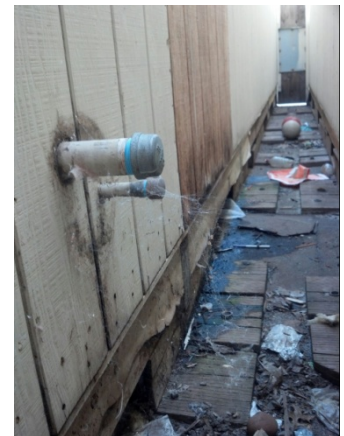
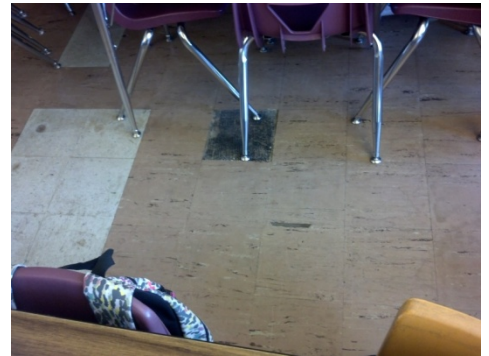
- ☐ Elementary - Undersized MPRs and Libraries
- ☐ Mixing of vehicular traffic and lack adequate of drop off areas
- ☐ No Music Rooms
- ☐ Inappropriate Special Education Facilities
- ☐ Not enough data and electrical outlets
- ☐ Not enough purposed built K and TK rooms
- ☐ Jr and Sr Undersized classrooms



Building and Site Condition Assessment - reoccurring needs:

□ Elementary School:

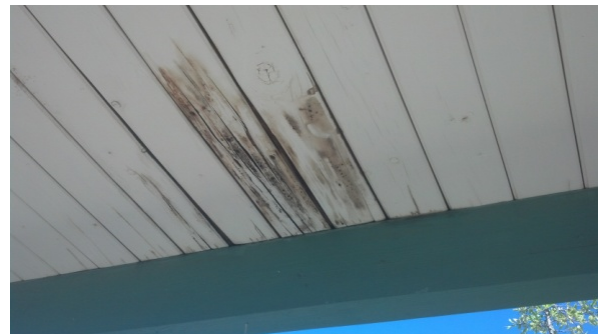
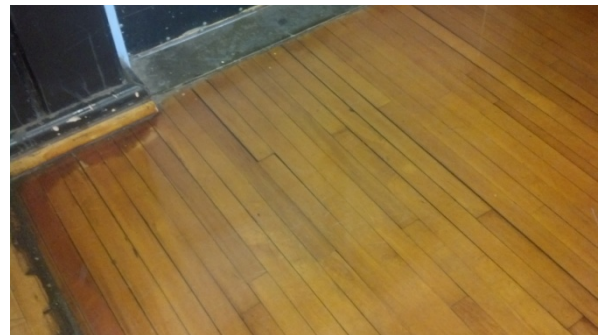
- ▣ Rot at covered walkways
- ▣ Flooring issues, both Tile and Carpet
- ▣ Portables are old and in bad shape
- ▣ Roof Leaks, ceiling stains
- ▣ Lighting and other electrical capacities
- ▣ Shade at outdoor space
- ▣ Window walls are non insulated, HVAC systems are not efficient
- ▣ Old crowded, inefficient Freezers
- ▣ Old Kitchens, inefficient equipment
- ▣ Poor Site Drainage
- ▣ Poor Use of outdoor space
- ▣ Gophers and Snakes
- ▣ Site security, safety



Building and Site Condition Assessment - reoccurring needs:

☐ Jr High School:

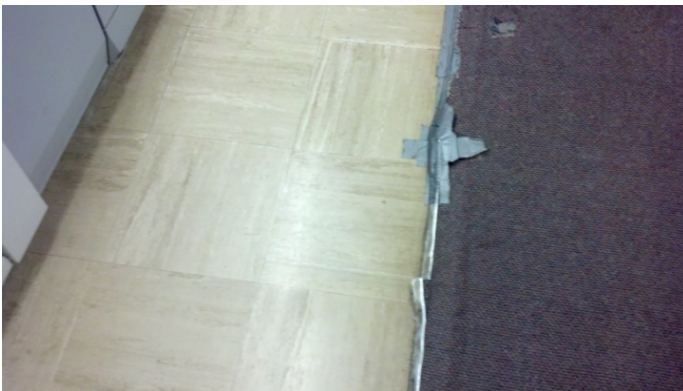
- ☒ Roof Leaks and rot at overhangs and covered walkways
- ☒ Flooring Issues
- ☒ Poor condition of cafeteria at Marsh
- ☒ Technology connectivity
- ☒ Electrical capacities
- ☒ Lighting issues
- ☒ Site security, safety



Building and Site Condition Assessment - reoccurring needs:

☐ Sr High Schools:

- ☐ Roof leaks, ceiling stains
- ☐ Electrical and Technology capacities
- ☐ Flooring issues
- ☐ Overhang leaks
- ☐ Exterior finishes
- ☐ PE Fields and Sports Fields



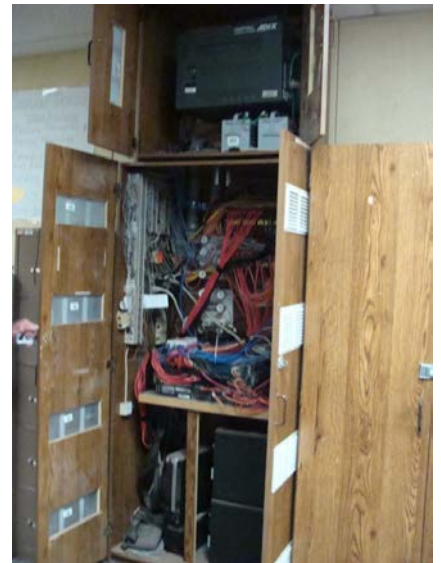
Accessibility –ADA Summary



- ☒ First step in creating an ADA Transition Plan
- ☒ Every school site assessed over two month period
- ☒ Many non-compliant improvements were discovered
 - This is a significant amount, but not surprising given the age of most of the schools and facilities
- ☐ Next step is to outline the methods to remove these barriers to make schools and facilities accessible
 - With the creation of a priority matrix and cost estimates, the District can produce a timeline for their schools and facilities to become compliant
- ☐ Ongoing commitment to code compliance

Technology Infrastructure Summary

- ☐ Wide Area Network
 - ☐ Increase the District's single 1Gb connection
 - ☐ Add a second load sharing connection from the district to the COE
 - ☐ Increase data speed from both the District to COE and the second (Bidwell Data Center to COE)
 - ☐ Secure ownership, currently maintained by the COE allowing the district to be more independent.
- ☐ Data Center
 - ☐ Revise server room DC1 to allow rack layouts
 - ☐ Upgrade air conditioner
 - ☐ Increase Power Supply
 - ☐ Add a secure entry
 - ☐ Add new network switches and routers for the upgraded WAN circuits
 - ☐ DC2 (Bidwell) add air conditioning, rack space, upgrade network switches
 - ☐ Make DC2 the Main Data Center
- ☐ District LAN
 - ☐ Update wiring
 - ☐ Add controlled wireless access points
- ☐ School Campus LAN/WLAN
 - ☐ Upgrade all campuses with cabling and wireless to meet District Standards
 - ☐ Add wireless access points
- ☐ E-rate Schools
 - ☐ Chapman Elementary
 - ☐ Rosedale Elementary
 - ☐ McManus Elementary
 - ☐ Parkview Elementary
 - ☐ Fair View High School
 - ☐ Citrus Elementary



K12 Facilities Functional Assessment			
School name		Chapman	Grade config.
Principal		TED SULLIVAN	School type
School website		http://chapman.chicousd.org/	
Point of contact - email			Office Manager
Point of contact - phone		(530) 891-3100	Wendy Billingsley
Address		1071 East 16th Street	Enrollment
			364
Score Summary			
Building Score		40	
Capacity		64	
Adjacency		53	
Function / Amenities		61	
Ed Building Score		60	
Condition Building Score		20	
Site Score		35	
Ed Site Score		53	
Condition Site Score		16	
Technology Score		11	
Accessibility Score		11	

K12 Facilities Functional Assessment - EDUCATION / TECHNOLOGY				
Assessor: Ellen		Score	Comments	
Site				
Site Parking				
Staff parking - capacity		5	Across the street	
Staff parking - location		3		
Visitor parking - capacity		5		
Visitor parking - location		2		
Vehicle Traffic Flows/ Roads				
Traffic approach		2	Need to know to turn in parking before making it to the site or go through the drop off area City streets dead into drop off pick up area and there are conflicts with one way streets, people will go the wrong way on the one way drop off area or cut through parking lot to access other street Parking lot circulation is good In the middle of the ped cross walk from parking lot and drop off zone bus and parent is the same cross walk is connected to service road	
Traffic routes		2		
Traffic circulation		3		
Sep. - delivery vehicles		1		
Separation - school bus		1		
Pedestrian Traffic Flows				
Separation - vehicles		1	All use the same area Parking is covered with solar and school has some overhang but not adjacent to drop off area Adjacent to side walk Does have a sidewalk that is on the other side of the bus lane Mostly covered walkways between buildings and a compact building footprint	
Covered walkways		2		
students bus lines		3		
students parent lines		2		
Internal building circulation		4		
Outdoor Playing Fields/ Courts/ Physical Education			Note Quantity	
Track		n	One set of restrooms is well places, grade levels using the D wing need to go between buildings to access Some fields wrap around the side of buildings to the street which are under utilized Use old boiler room and tuff shed	
Field - Football		n		
Fields		5		
Tack		2		
Courts - Basketball		3		
Rest Rooms		3		
Location of fields/courts		3		
Playing field storage		3		

Playgrounds			
K Playground Size		2	no fence, limited hard top, hard supervise, limited shade one tree
K Playground - Equipment			
K Playground Location			
Elem Playground Size			
Elem Playground - Equipment			
Elem Playground Location			
Site Security			
Fencing		n	2 No fencing between buildings in the front of the school 3 parking has good lighting, around buildings and playground is limited to building mounted lights 2 Behind the A building and around portables 2 Adjacent park causes some difficulty, front area by kindergarten is also difficult 2 Not in fields 4
External Lighting			
Blind spots			
Camera & Video			
Easy to supervise			
PA system - all areas			
Emergency vehicle access			
School Environment			
Acoustics		4	3 A building and portables are somewhat removed and face the park 4 Court yard is utilized, other buildings have hard scape areas that can be less inviting 2 Limited connection between school and parking lot, landscape is stolen, could use a new paint job
Functional/ logical layout			
Break out areas			
"Curb Appeal"			
IT Environment			
Sufficient power outlets		n	
Sufficient data outlets			
Server/ switch rooms			
Power Backups		n	
Sufficient projectors			
Sufficient smart boards		n	
Wireless LAN coverage			
"Cable" LAN coverage			
Broadband Speed			
Network Equipment			

Buildings			
Restrooms			
Restrooms (staff) - size		2	only near the office slightly under for current pop and will be really under at full cap
Restrooms (staff) - location		1	
Restrooms (Student)- size	ES - 1 per 35. MS/HS 1 p	1	
Restrooms (Student) - locn.		4	
School Administrative Areas			
Front office - size		1	Very small with no waiting space for visitors or students, behind the counter space only for staff In front hallway but limited visibility of who is coming into the school a huge concern for principal, see size note one cot against the desk small frig no lock lots of storage, a maze to get to the sink, 4 tables Small size limits functionality standard Limited in office Limited in office
Front office - location		3	
Front office - Functionality		1	
Clinic - size		3	
Clinic - location		4	
Clinic - cold storage		3	
Clinic - storage		4	
Teachers Workroom - size		4	
Teachers Workroom - location		4	
Teachers Workroom - functionality		4	
Counseling - size		2	
Counseling - Adjacency		4	
Counseling - Functionality		3	
Custodial - size		4	
Custodial - location		4	
Custodial - storage		4	
Lighting - ALL		4	
Data - Cable/Wireless - ALL		2	
Power outlets - ALL		2	
Cafeteria - Eating area			
Eating area - size		2	300 hot lunch, in 3 lunch periods rainy day supervision , sometimes use courtyard, ok for school site now but not capacity use court yard but no dedicated shade structure hard to lock down for the rest of campus along back wall, no stage
Eating area - size exterior		2	
Eating area - adjacency		4	
Eating area - layout		4	
Eating area - storage		4	
Kitchen - Food Prep			
Kitchen - size		4	Would work if remodeled Small frig, walk through serving line small although close for this size enrollment old dishwasher but does have double oven and stove
Kitchen - layout		2	
Kitchen - storage		3	
Kitchen - fixed equipment		3	

Auditorium/ Performing Arts			
Auditorium - size		1	No stage
Auditorium - storage		1	No stage/ audio equipment is in MPR on carts
PE			
PE Office - storage		3	in old boiler room
General Classrooms - Preschool		1	Qty.
Size		4	Requires students and parents to come through the campus Under what would be in a new Preschool
Quantity		4	
Adjacency		1	
layout		4	
Storage		2	
Fixed equipment		4	
Bathrooms		4	
Lighting		4	
Data - Cable/Wireless		3	
Power outlets		4	
Workroom		n	
General Classrooms - Kindergarten		2	Qty.
Size	1350 sq. ft.	3	around 50 sf short of standard One kindergarten needs to be held in a regular classroom "porch" area is long and narrow and can be difficult to use one wing wall of full size and lower cabs under windows Kid height sink but not adult Boys and girls in classroom but not ADA all on and all off - no selection, good natural light
Quantity		1	
Adjacency		4	
layout		3	
Storage		4	
Fixed equipment		3	
Bathrooms		3	
Lighting		3	
Data - Cable/Wireless		3	
Power outlets		3	
Workroom		n	
General Classrooms - Elementary Building A		4	Qty.
Size	960 sq ft.	5	
layout		4	
Storage		3	
Fixed equipment		4	
Lighting		1	
Data - Cable/Wireless		2	
Power outlets		3	

General Classrooms - Elementary Building B &		3	Qty.
Size	960 sq ft.	4	4 Partial wall sink 1 light scheme, limited windows 4 2 pre wall
layout		4	
Storage		3	
Fixed equipment		4	
Lighting		2	
Data - Cable/Wireless		3	
Power outlets		4	
General Classrooms - Elementary Building E &		6	Qty.
Size	960 sq ft.	5	4 sink on or off, good natural light 2 2 maybe 3 4 8pre room
layout		4	
Storage		5	
Fixed equipment		4	
Lighting		3	
Data - Cable/Wireless		2	
Power outlets		4	
Interventions / Resource / Alternative Learning		4	Qty.
Size		5	4 all in portables and away from core and parking one portable does have smaller rooms 2 otherwise unused classrooms where curtains have been hung 4 4 Sink 3 single schemes with standard portable windows 3 3
Quantity		4	
Adjacency		1	
layout		2	
Storage		4	
Fixed equipment		4	
Lighting		3	
Data - Cable/Wireless		3	
Power outlets		3	
Special Education Learning Spaces		1	Qty.
Size		3	990 4 4 4 4 4 sink 3 on or off, good natural light 1 in room 3
Quantity		4	
Adjacency		4	
layout		4	
Storage		4	
Fixed equipment		4	
Lighting		3	
Data - Cable/Wireless		1	
Power outlets		1	

Special Education Learning Spaces		1	Qty.
Size		3	960
Quantity		4	
Adjacency		2	far side of campus
layout		4	two room split
Storage		3	
Fixed equipment		4	
Lighting		4	2 scheme by row
Data - Cable/Wireless		1	1 in room
Power outlets		2	limited
Special Education Learning Spaces - Severe Needs		3	Qty.
Size		4	sensory gym in a separated space
Quantity		4	
Adjacency		3	a little removed
layout		4	connected rooms in complex with support spaces and cubical walls to make smaller areas
Storage		2	two walls in one room but none in flooded room
Fixed equipment		4	Sink
Changing facilities		1	use nurse
Attached bathroom		3	in classroom that is currently flooded but not in other class
Kitchenette		2	2 small frig, microwave and hot plate, flips circuit
Lighting		1	one scheme, lights covered
Data - Cable/Wireless		1	1 data drop
Power outlets		3	7 outlets
Library/ Media Centre			
Size		2	ok for current enrollment, not for capacity
Adjacency		4	
layout		2	no rug area
Front desk		4	
Media area		2	7 old computers
Collection area		4	
Office	n		
Storage		1	one cabinet
Lighting		2	Limited natural light, 1 scheme
Data - Cable/Wireless		2	computers and front desk
Power outlets		1	6 in room
Music		1	Qty.
Size		1	None
Quantity		1	None
Adjacency	n		None
layout	n		None
Storage		1	None

Computer Technology Lab		1	Qty.
Size	1300 sq ft. 960 sq ft. std	1	None
Quantity		1	None
Adjacency		n	None
layout		n	None
Storage		1	None
Lighting		n	None
Data - Cable/Wireless		n	None
Power outlets		n	None
Capacity		64	
Adjacency		53	
Function / Amenities		61	
Site		53	
Technology		54	
Notes/ Other			
<i>Erate site Technology is better than most but not to standards.</i>			

K12 Facilities Functional Assessment - CONDITION				
Assessor: Tim Haley		Score	Comments	
Site Section				
Code & Local Environment				
Asbestos		1	Floor, Insulation	
Lead Paint		1	Not Tested but suspect in older areas	
Access to Utilities		2		
Drainage		1		
Cooling - Local or Central		2		
Heating - Local or Central		2		
Site Parking				
Site Parking	Paving	3		
Site Parking	Landscape	1		
ADA Access		1		
Vehicle Traffic Flows/ Roads				
Traffic approach		2		
Traffic circulation		3		
ADA Access		1		
Pedestrian Traffic Flows				
Covered walkways		2		
Pedestrian Sidewalks		2		
Pedestrian Areas - Quads		2		
Landscaping		1		
ADA Access		1		
Outdoor Playing Fields/ Courts/ Physical Education				
Field - Soccer		1	gopher holes	
Field - Baseball		n		
Field - Softball		n		
Courts - Basketball		2	pavement	
Playing field storage		1		
Fields	ADA	1		

Playgrounds			
PK Playground	Paving	1	cracked, limited hot
PK Playground	Equipment	1	very little
PK Playground	Grass	2	
PK Playground	Shade Structures	1	
PK Playground	ADA	1	
Elem Playground	Paving	1	cracked
Elem Playground	Equipment	1	old, very little
Elem Playground	Grass	2	
Elem Playground	Shade Structures	1	
Elem Playground	ADA	1	
Site Security			
Fencing		1	
External Lighting		1	
Controlled access		1	
Camera & Video		1	some video
Burglar alarms		1	
PA system - all areas		1	
Phone system - inst. Spaces		2	
Fire Sprinklers		1	
Emergency vehicle access		1	

Facilities Section			
Restrooms			
Restrooms (staff)	Ceilings	1	portable
Restrooms (staff)	Walls	1	
Restrooms (staff)	Floors	1	
Restrooms (staff)	Plumbing Fixtures	1	
Restrooms (staff)	HVAC	1	
Restrooms (staff)	Lighting	1	
Restrooms (staff)	ADA	1	
Restrooms (Student)	Ceilings	1	
Restrooms (Student)	Walls	1	
Restrooms (Student)	Floors	1	
Restrooms (Student)	Plumbing Fixtures	1	
Restrooms (Student)	HVAC	1	
Restrooms (Student)	Lighting	1	
Restrooms (Student)	ADA	1	
Drinking fountains		1	not enough
Drinking fountains	ADA	1	

School Administrative Areas			
Front office	Ceilings	1	10" tile
Front office	Walls	2	
Front office	Floors	2	
Front office	Plumbing Fixtures	2	
Front office	HVAC	2	
Front office	Lighting	1	
Front office	ADA	1	
Clinic	Ceilings	2	
Clinic	Walls	2	windows sun
Clinic	Floors	2	vct
Clinic	Plumbing Fixtures	1	
Clinic	HVAC	2	
Clinic	Lighting	2	
Clinic	Cabinets	2	
Clinic	ADA	1	
Teachers Lounge	Ceilings	1	cr converted
Teachers Lounge	Walls	2	
Teachers Lounge	Floors	1	vct
Teachers Lounge	Plumbing Fixtures	2	
Teachers Lounge	HVAC	2	
Teachers Lounge	Lighting	1	
Teachers Lounge	Cabinets	2	
Teachers Lounge	ADA	2	
Counseling	Ceilings	2	portables
Counseling	Walls	2	
Counseling	Floors	1	vct cpt
Counseling	Plumbing Fixtures	2	sink
Counseling	HVAC	2	
Counseling	Lighting	1	
Counseling	ADA	1	
Custodial	Ceilings	1	
Custodial	Walls	1	cab cluttered filled
Custodial	Floors	2	conc
Custodial	Plumbing Fixtures	2	wall sink
Custodial	HVAC	1	
Custodial	Lighting	2	

Cafeteria			
Dining Area	Ceilings	2	wood beams, leaks
Dining Area	Walls	2	
Dining Area	Floors	2	1cpt vct
Dining Area	Plumbing Fixtures	n	
Dining Area	HVAC	1	
Dining Area	Lighting	1	
Dining Area	Sound System	1	
Dining Area	ADA	1	
Stage	Ceilings	n	
Stage	Walls	n	
Stage	Floors	n	
Stage	Plumbing Fixtures	n	
Stage	HVAC	n	
Stage	Lighting	n	
Stage	ADA	n	
Kitchen	Ceilings	2	painted
Kitchen	Walls	2	
Kitchen	Floors	1	act, poor, conc in toilets
Kitchen	Plumbing Fixtures	1	sink, toilet, no ada
Kitchen	HVAC	2	questionable
Kitchen	Lighting	1	
Kitchen	ADA	1	
Servery	Ceilings	1	
Servery	Walls	1	
Servery	Floors	1	
Servery	Plumbing Fixtures	n	
Servery	HVAC	2	
Servery	Lighting	1	
Servery	ADA	1	

General Classrooms - Preschool		1	Qty.
Classroom	Ceilings	3	
Classroom	Walls	3	
Classroom	Floors	3	
Classroom	Plumbing Fixtures	2	
Classroom	HVAC	3	
Classroom	Lighting	3	
Classroom	Sound System	3	
Classroom	Cabinets	3	
Classroom	ADA	2	
Workroom	Ceilings	n	
Workroom	Walls	n	
Workroom	Floors	n	
Workroom	Plumbing Fixtures	n	
Workroom	HVAC	n	
Workroom	Lighting	n	
Workroom	ADA	n	
Restrooms	Ceilings	3	
Restrooms	Walls	3	
Restrooms	Floors	2	
Restrooms	Plumbing Fixtures	2	
Restrooms	HVAC	3	
Restrooms	Lighting	3	
Restrooms	ADA	3	

General Classrooms - Kindergarten		2	Qty.
Classroom	Ceilings	1	act drop in
Classroom	Walls	1	
Classroom	Floors	1	cpt vct
Classroom	Plumbing Fixtures	1	sink, no ada
Classroom	HVAC	1	original
Classroom	Lighting	1	flor
Classroom	Sound System	1	
Classroom	Cabinets	1	no ada
Classroom	ADA	1	
Workroom	Ceilings	1	in old canopy
Workroom	Walls	1	windows
Workroom	Floors	1	vct
Workroom	Plumbing Fixtures	1	n
Workroom	HVAC	1	none
Workroom	Lighting	2	
Workroom	ADA	1	
Restrooms	Ceilings	2	painted
Restrooms	Walls	1	
Restrooms	Floors	1	sht v
Restrooms	Plumbing Fixtures	1	old
Restrooms	HVAC	1	bad vent
Restrooms	Lighting	1	
Restrooms	ADA	1	
General Classrooms - Elementary-Building A		4	Qty.
Classroom	Ceilings	2	
Classroom	Walls	2	
Classroom	Floors	1	vct, cpt, poor
Classroom	Plumbing Fixtures	2	sink, ada
Classroom	HVAC	2	
Classroom	Lighting	1	
Classroom	Sound System	2	
Classroom	Cabinets	2	
Classroom	ADA	2	

General Classrooms - Elementary-Building B		2	Qty.
Classroom	Ceilings	1	parent ctr
Classroom	Walls	2	
Classroom	Floors	1	cpt vct
Classroom	Plumbing Fixtures	1	sink
Classroom	HVAC	2	
Classroom	Lighting	1	flor
Classroom	Sound System	2	
Classroom	Cabinets	2	
Classroom	ADA	2	
General Classrooms - Elementary-Building C		4	Qty.
Classroom	Ceilings	2	
Classroom	Walls	2	
Classroom	Floors	1	cpt, vct
Classroom	Plumbing Fixtures	1	
Classroom	HVAC	2	
Classroom	Lighting	1	warm
Classroom	Sound System	2	
Classroom	Cabinets	1	
Classroom	ADA	1	
General Classrooms - Elementary-Building D		4	Qty.
Classroom	Ceilings	1	act
Classroom	Walls	2	one woid wall
Classroom	Floors	1	act
Classroom	Plumbing Fixtures	n	
Classroom	HVAC	1	warm
Classroom	Lighting	2	
Classroom	Sound System	n	
Classroom	Cabinets	2	
Classroom	ADA		

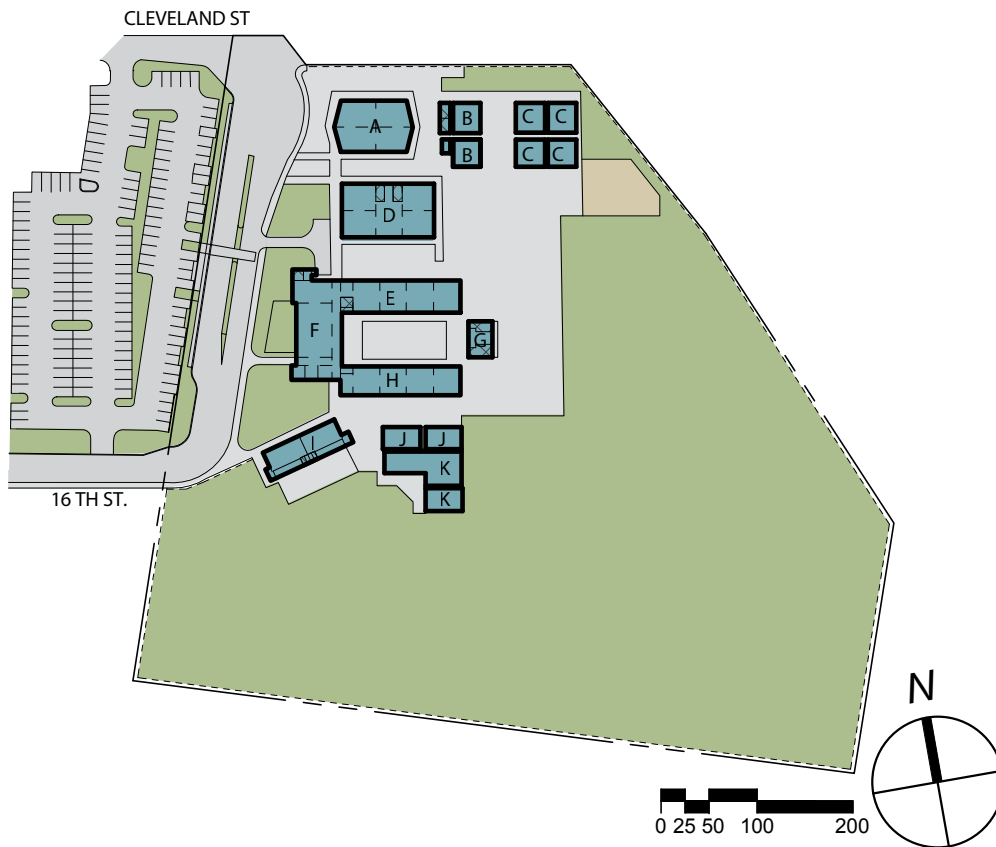
General Classrooms - Elementary-Building E & H		7	Qty.
Classroom	Ceilings	1	act
Classroom	Walls	1	
Classroom	Floors	1	vct
Classroom	Plumbing Fixtures	1	sink, no ada
Classroom	HVAC	1	warm
Classroom	Lighting	1	flor drop
Classroom	Sound System	2	
Classroom	Cabinets	1	
Classroom	ADA	1	
General Classrooms - Elementary-Building J		2	Qty.
Classroom	Ceilings	3	New 2x4 Grid
Classroom	Walls	3	
Classroom	Floors	3	
Classroom	Plumbing Fixtures	n	
Classroom	HVAC	3	
Classroom	Lighting	3	
Classroom	Sound System	2	
Classroom	Cabinets	1	
Classroom	ADA	2	
General Classrooms - Elementary-Building K		1	Qty.
Classroom	Ceilings	3	
Classroom	Walls	3	
Classroom	Floors	3	
Classroom	Plumbing Fixtures	n	
Classroom	HVAC	3	
Classroom	Lighting	3	
Classroom	Sound System	3	
Classroom	Cabinets	3	
Classroom	ADA	2	

Special Education Learning Spaces - Severe Needs			
Classroom	Ceilings	2	
Classroom	Walls	2	
Classroom	Floors	1	
Classroom	Plumbing Fixtures	1	
Classroom	HVAC	2	
Classroom	Lighting	2	
Classroom	Sound System	2	
Classroom	Cabinets	1	
Classroom	ADA	1	
Restrooms	Ceilings	2	
Restrooms	Walls	2	
Restrooms	Floors	1	
Restrooms	Plumbing Fixtures	2	
Restrooms	HVAC	1	
Restrooms	Lighting	1	
Restrooms	ADA	1	

Library/ Media Centre			
Library/ Media Centre	Ceilings	1	drop in
Library/ Media Centre	Walls	2	
Library/ Media Centre	Floors	2	cpt
Library/ Media Centre	Plumbing Fixtures	n	
Library/ Media Centre	HVAC	2	
Library/ Media Centre	Lighting	2	
Library/ Media Centre	Sound System	2	
Library/ Media Centre	Cabinets	2	book cases
Library/ Media Centre	ADA	2	
Workroom	Ceilings	2	
Workroom	Walls	2	
Workroom	Floors	1	act
Workroom	Plumbing Fixtures	n	
Workroom	HVAC	2	
Workroom	Lighting	1	
Workroom	ADA	2	
Classroom/Lab	Ceilings	2	
Classroom/Lab	Walls	2	
Classroom/Lab	Floors	1	act
Classroom/Lab	Plumbing Fixtures	1	sink, no ada
Classroom/Lab	HVAC	2	
Classroom/Lab	Lighting	2	
Classroom/Lab	Sound System	2	
Classroom/Lab	Cabinets	2	
Classroom/Lab	ADA	1	
Music			
Classroom/Lab	Ceilings	n	None
Classroom/Lab	Walls	n	
Classroom/Lab	Floors	n	
Classroom/Lab	Plumbing Fixtures	n	
Classroom/Lab	HVAC	n	
Classroom/Lab	Lighting	n	
Classroom/Lab	Sound System	n	
Classroom/Lab	Cabinets	n	
Classroom/Lab	ADA	n	

Computer Technology Lab			
Classroom/Lab	Ceilings	n	
Classroom/Lab	Walls	n	
Classroom/Lab	Floors	n	
Classroom/Lab	Plumbing Fixtures	n	
Classroom/Lab	HVAC	n	
Classroom/Lab	Lighting	n	
Classroom/Lab	Sound System	n	
Classroom/Lab	Cabinets	n	
Classroom/Lab	ADA	n	

Building Exterior			
Building A	Roof	1	
Building A	Walls	2	No Windows, Painted Stucco
Building A	Windows	1	Minimum windows and alum
Building B	Roof	1	Portable
Building B	Walls	1	
Building B	Windows	1	
Building C	Roof	1	Portable
Building C	Walls	1	
Building C	Windows	1	
Building D	Roof	1	Leaks visible
Building D	Walls	2	
Building D	Windows	1	alum, non-insulated
Building E	Roof	1	Leaks and Rot visible
Building E	Walls	2	
Building E	Windows	1	alum, non-insulated original windows
Building F	Roof	1	
Building F	Walls	2	
Building F	Windows	1	
Building G	Roof	1	
Building G	Walls	1	
Building G	Windows	1	
Building H	Roof	1	
Building H	Walls	2	
Building H	Windows	1	
Building I	Roof	2	Portable
Building I	Walls	2	
Building I	Windows	2	
Building J	Roof	1	portable
Building J	Walls	1	
Building J	Windows	1	
Building K	Roof	1	
Building K	Walls	1	
Building K	Windows	1	
Site		16	
Building		20	
ADA		11	
Notes/ Other			
ace program.			old cr not new
roof leaks			



CHAPMAN ELEMENTARY SCHOOL

1071 East 16th St.

Chico, CA 95928

SCHOOL

- Teaching Stations 24

SITE

- Site Acreage 9.77

BUILDING

- Date of Original DSA Approval 1953; 1989

LEGEND



Existing Toilet
Rooms



Existing
Building

BUILDING DESIGNATIONS

- A Classrooms
- B Relocatable Classrooms (2)
- C Classrooms
- D Classrooms and Library
- E Classrooms
- F Multipurpose
- G Restrooms
- H Classrooms
- I Kindergarten
- J Relocatable Classroom (Spec. ED)
- K Classrooms

K12 Facilities Functional Assessment			
School name		Marsh Jr.	Grade config
Principal		JAY MARCHANT	School type
School website			
Point of contact - email			Office Manager
Point of contact - phone		(530) 895-4110	Alana Meline
Address		2253 Humboldt Road	Enrollment
			558
Score Summary			
Building Score		50	
Capacity		61	
Adjacency		60	
Function / Amenities		54	
Ed Building Score		58	
Condition Building Score		42	
Site Score		51	
Ed Site Score		58	
Condition Site Score		43	
Technology Score		56	
Accessibility Score		26	

K12 Facilities Functional Assessment - EDUCATION / TECHNOLOGY				
Assessor:		Score	Comments	
Site				
Site Parking				
Staff parking - capacity		4	parking by gym is good for events but far for staff	
Staff parking - location		3		
Visitor parking - capacity		4		
Visitor parking - location		4		
Vehicle Traffic Flows/ Roads				
Traffic approach		4	parking entrances are good distant from drop off	
Traffic routes		4		
Traffic circulation		4		
Sep. - staff/parents vehicle		3		
Sep. - delivery vehicles		4		
Separation - school bus		1		one drop off for everyone
Pedestrian Traffic Flows				
Separation - vehicles		4	portables and gym are far away without covers	
Covered walkways		2		
students bus lines		3		shade but no cover
students parent lines		3		shade but no cover
Internal building circulation		n		
Outdoor Playing Fields/ Courts/ Physical Education				
Track		4	chopped up by track and solar , no softball & Baseball	
Field		2		
Courts - Basketball		4		
Rest Rooms		2		removed from the fields
Location of fields/courts		2		odd shape and difficult to utilize
Playing field storage		4		
Site Security				
Fencing		1	only around fields	
Accessibility Score		2	limited lighting in parking	
Controlled access		1	none	
Blind spots		3	around portables and solar	
Camera & Video		3		
PA system - all areas		3	not in fields	
Emergency vehicle access		4		

School Environment			
"Curb Appeal"		3	
IT Environment			
Sufficient power outlets		n	
Sufficient data outlets		2	
Server/ switch rooms		2	
Power Backups		n	
Sufficient projectors		n	
Sufficient smart boards		n	
Wireless LAN coverage		2	
"Cable" LAN coverage		2	
Broadband Speed		4	
Network Equipment		2	
Buildings			
Restrooms			
Restrooms (staff) - size		4	
Restrooms (staff) - location		4	
Restrooms (Student)- size	ES - 1 per 35. MS	3	
Restrooms (Student) - locn.		2	not in classroom area
School Administrative Areas			
Front office - size		5	
Front office - location		5	
Front office - Functionality		5	
Principal's office - size		5	
Principal's office - location		4	back door
Asst Principal's office - size		4	
Asst Principal's office - locn.		4	back door love it
Clinic - size		4	
Clinic - location		4	
Clinic - cold storage		4	small frig
Clinic - storage		3	built in counter
Teachers Lounge / work- size		4	several smaller rooms, one copier-admin
Teachers Lounge / work - location		4	
Teachers Lounge work- functionality		4	
Counseling - size		3	some counseling need to move out into the campus
Counseling - Adjacency		4	
Counseling - Functionality		4	
Custodial - size		3	portables are not well supported
Custodial - location		3	portables are not well supported
Custodial - storage		4	

<i>Cafeteria - Eating area</i>			
Eating area - size		1	very small, lunch service takes most the space
Eating area - adjacency		1	out of main campus
Eating area - layout		1	poor
Eating area - storage		1	none
<i>Kitchen - Food Prep</i>			
Kitchen - size		1	
Kitchen - layout		1	
Kitchen - storage		1	
Kitchen - fixed equipment		1	
<i>Auditorium/ Performing Arts</i>			
Auditorium - size		n	
Auditorium - adjacency		n	
Auditorium - storage		n	
Auditorium - layout		n	
Auditorium - lighting		n	
Auditorium sound system		n	
Auditorium - dressing rooms		n	
Data - Cable/Wireless		n	
Power outlets		n	

PE			
Quantity		3	have the gym and classroom for rainy days which would not be ideal on rainy days
Courts - type and number		4	3 side not full size bb but full volleyball
Stands/ Bleachers		4	
Gym Lighting		4	
Power outlets		4	
Storage		4	
Locker rooms - size		4	
Locker rooms - location		4	
Locker rooms - function		3	tight if at full capacity
PE Office - size		4	3 desk on each side + another office
PE Office - location		4	in lockerroom
PE Office - storage		4	
Dance/Aerobics-Size	not less than 200	n	
Dance/Aerobics-Equipment/Finish		n	
Dance/Aerobics-Location		n	
Weight-Size	not less than 200	n	
Weight-Equipment/Finish		n	
Weight-Location		n	
Fitness-Size	not less than 200	n	
Fitness-Equipment/Finish		n	
Fitness-Location		n	
Data - Cable/Wireless - ALL		2	
Power outlets - ALL		4	
General Classrooms - Jr./Sr. Building B & C		11	Qty.
Size	960 sq ft.	3	
layout		3	one has breakout lab, alcoves for teacher desks or breakout takes out area for the needed 35 desks
Storage		4	teacher wardrobe, poster drawer, lower cabs and counter tops
Fixed equipment		n	none
Lighting		3	2 schemes every other
Data - Cable/Wireless		2	
Power outlets		4	

6
11

Interventions / Resource / Alternative Learning S		4	Qty.
Size		4	
Quantity		4	
Adjacency		2	out in portables
layout		4	
Storage		1	no buildings
Fixed equipment	n		no sinks
Lighting		3	by bank 2
Data - Cable/Wireless		2	8
Power outlets		4	10
Special Education Learning Spaces - Autism		1	Qty.
Size		2	
Quantity		4	
Adjacency		4	
layout		3	same as a classroom
Storage		4	
Fixed equipment		1	no sink
Attached bathroom		2	next door in teacher lounge
Kitchenette		2	makeshift
Lighting		1	same as a classroom
Data - Cable/Wireless		2	6
Power outlets		4	11
Special Education Learning Spaces - ED		1	Qty.
Size	not less than 200	4	does have a quite room, clinician office with therapy area, in other portables
Quantity		4	
Adjacency		3	support spaces in other portables
layout		3	support spaces in other portables
Storage		1	none built in
Fixed equipment		1	none built in
Attached bathroom		3	in clinicians office
Kitchenette		1	none
Lighting		1	1 scheme
Data - Cable/Wireless		1	1
Power outlets		3	5 or 6

Library/ Media Centre			
Size		4	good size
Adjacency		4	middle of campus
layout		2	nice looking but not well utilized, hard to see screen from tables. Tables do not seat full class
Front desk		4	very big
Media area		4	40
Collection area		4	do not fill the ones under the window
Classroom/Lab		n	
Office		4	large workroom
Storage		4	book storage in back
Fixed equipment		4	sink
Lighting		4	multiple
Data - Cable/Wireless		2	supports computers
Power outlets		4	
Music		1	Qty.
Size		1	none
Quantity		1	none
Adjacency		n	
layout		n	
Storage		1	none
Fixed equipment		n	
Rehearsal/practice spaces	not less than 50 sq ft	n	
Lighting		n	
Data - Cable/Wireless		2	
Power outlets		n	
Art		1	Qty.
Size		4	
Quantity		4	
Adjacency		4	
layout		4	
Storage		4	
Fixed equipment		4	
External access		4	courtyard with kiln
Natural light		3	limited
Lighting		4	
Data - Cable/Wireless		2	
Power outlets		4	

Computer Technology Lab		1	Qty.
Size	1300 sq ft. 960 sq ft.	4	
Quantity		2	only one
Adjacency		4	in library but separated
layout		3	most screens in one direction but a few backwards. Hard to see main screen
Storage		4	one cabinet
Fixed equipment		n	none
Lighting		3	dark
Data - Cable/Wireless		2	
Power outlets		4	
Applied Computing Lab - broadcasting		1	Qty.
Size	1300 sq ft. 960 sq ft.	3	
Quantity		4	
Adjacency		1	hard to supervise
Science Rooms/ Labs		4	Qty.
Size	1300 sq ft.	1	small at tables have to seat students at counter
Quantity		4	
Adjacency		4	
layout		2	limited by size
Storage		3	added home depot cabinets in classroom
Fixed equipment		1	only one sink in classroom, lab has sink and with hood that is not used, only 1 room has gas
Safety		3	wash v shower in most
Lighting		1	one light scheme
Data - Cable/Wireless		2	wire mold around labs
Power outlets		4	wire mold around labs
Vocational areas		0	Qty.
Culinary Arts		1	Qty.
Size	1300 sq ft.	5	
Adjacency		4	
layout		4	
Storage		4	
Safety		4	
Lighting		4	
Fixed equipment		4	
Power outlets		4	
Data - Cable/Wireless		2	

Capacity	61	
Adjacency	60	
Function / Amenities	54	
Site	58	
Technology	56	

K12 Facilities Functional Assessment - CONDITION			
Assessor: Tim Haley		Score	Comments
Site Section			
Code & Local Environment			
Asbestos		4	
Lead Paint		4	
Access to Utilities		3	
Drainage		3	
Cooling - Local or Central		3	
Heating - Local or Central		3	
Site Parking			
Site Parking	Paving	3	
Site Parking	Landscape	3	
ADA Access		2	
Vehicle Traffic Flows/ Roads			
Traffic approach		3	
Traffic circulation		3	
ADA Access		2	
Pedestrian Traffic Flows			
Covered walkways		1	
Pedestrian Sidewalks		3	
Pedestrian Areas - Quads		3	
Landscaping		3	
ADA Access		2	

<i>Outdoor Playing Fields/ Courts/ Physical Education</i>			
Track		n	
Field - Football		n	
Field - Soccer		3	
Field - Baseball		n	
Field - Softball		3	
Courts - Tennis		n	
Courts - Basketball		3	
Stands / Amenities		n	
Playing field storage		2	
Fields	ADA	1	
Stands	ADA	n	
<i>Site Security</i>			
Fencing		2	
External Lighting		1	
Controlled access		1	
Camera & Video		1	
Burglar alarms		1	
PA system - all areas		3	
Phone system - inst. Spaces		3	
Fire Sprinklers		1	
Emergency vehicle access		3	

Facilities Section			
Restrooms			
Restrooms (staff)	Ceilings	3	
Restrooms (staff)	Walls	3	
Restrooms (staff)	Floors	3	
Restrooms (staff)	Plumbing Fixtures	2	
Restrooms (staff)	HVAC	3	
Restrooms (staff)	Lighting	2	
Restrooms (staff)	ADA	2	
Restrooms (Student)	Ceilings	3	
Restrooms (Student)	Walls	3	
Restrooms (Student)	Floors	3	
Restrooms (Student)	Plumbing Fixtures	3	
Restrooms (Student)	HVAC	3	
Restrooms (Student)	Lighting	2	
Restrooms (Student)	ADA	2	
Drinking fountains		2	
Drinking fountains	ADA	2	

School Administrative Areas			
Front office	Ceilings	3	varies
Front office	Walls	2	
Front office	Floors	3	vct
Front office	Plumbing Fixtures	n	
Front office	HVAC	3	
Front office	Lighting	3	
Front office	ADA	3	
Principal's office	Ceilings	3	
Principal's office	Walls	3	
Principal's office	Floors	3	cpt
Principal's office	Plumbing Fixtures	3	toilet
Principal's office	HVAC	3	
Principal's office	Lighting	3	
Asst Principal's office	Ceilings	3	gwb
Asst Principal's office	Walls	3	
Asst Principal's office	Floors	3	cpt
Asst Principal's office	Plumbing Fixtures	n	
Asst Principal's office	HVAC	3	
Asst Principal's office	Lighting	3	
Clinic	Ceilings	3	gwb sloped
Clinic	Walls	3	
Clinic	Floors	3	vct
Clinic	Plumbing Fixtures	3	
Clinic	HVAC	2	
Clinic	Lighting	3	
Clinic	Cabinets	3	
Clinic	ADA	3	
Teachers Lounge	Ceilings	2	layin
Teachers Lounge	Walls	2	
Teachers Lounge	Floors	2	vct
Teachers Lounge	Plumbing Fixtures	2	sink
Teachers Lounge	HVAC	2	
Teachers Lounge	Lighting	2	
Teachers Lounge	Cabinets	2	
Teachers Lounge	ADA	2	

Counseling	Ceilings	3	
Counseling	Walls	3	
Counseling	Floors	3	
Counseling	Plumbing Fixtures	n	
Counseling	HVAC	3	
Counseling	Lighting	3	
Counseling	ADA	3	
Custodial	Ceilings	3	gwb
Custodial	Walls	3	
Custodial	Floors	3	v
Custodial	Plumbing Fixtures	3	
Custodial	HVAC	3	
Custodial	Lighting	3	

Cafeteria			
Dining Area	Ceilings	1	
Dining Area	Walls	1	
Dining Area	Floors	1	
Dining Area	Plumbing Fixtures	1	
Dining Area	HVAC	1	
Dining Area	Lighting	1	
Dining Area	Sound System	1	
Dining Area	ADA	1	
Stage	Ceilings	n	
Stage	Walls	n	
Stage	Floors	n	
Stage	Plumbing Fixtures	n	
Stage	HVAC	n	
Stage	Lighting	n	
Stage	ADA	n	
Kitchen	Ceilings	1	
Kitchen	Walls	1	
Kitchen	Floors	1	
Kitchen	Plumbing Fixtures	1	
Kitchen	HVAC	1	
Kitchen	Lighting	1	
Kitchen	ADA	1	
Servery	Ceilings	1	
Servery	Walls	1	
Servery	Floors	1	
Servery	Plumbing Fixtures	1	
Servery	HVAC	1	
Servery	Lighting	1	
Servery	ADA	1	
Auditorium/ Performing Arts			
Auditorium	Ceilings	3	12x12
Auditorium	Walls	2	gwb v
Auditorium	Floors	2	vct
Auditorium	Plumbing Fixtures	n	
Auditorium	HVAC	2	return
Auditorium	Lighting	2	
Auditorium	Sound System	1	
Auditorium	ADA	2	

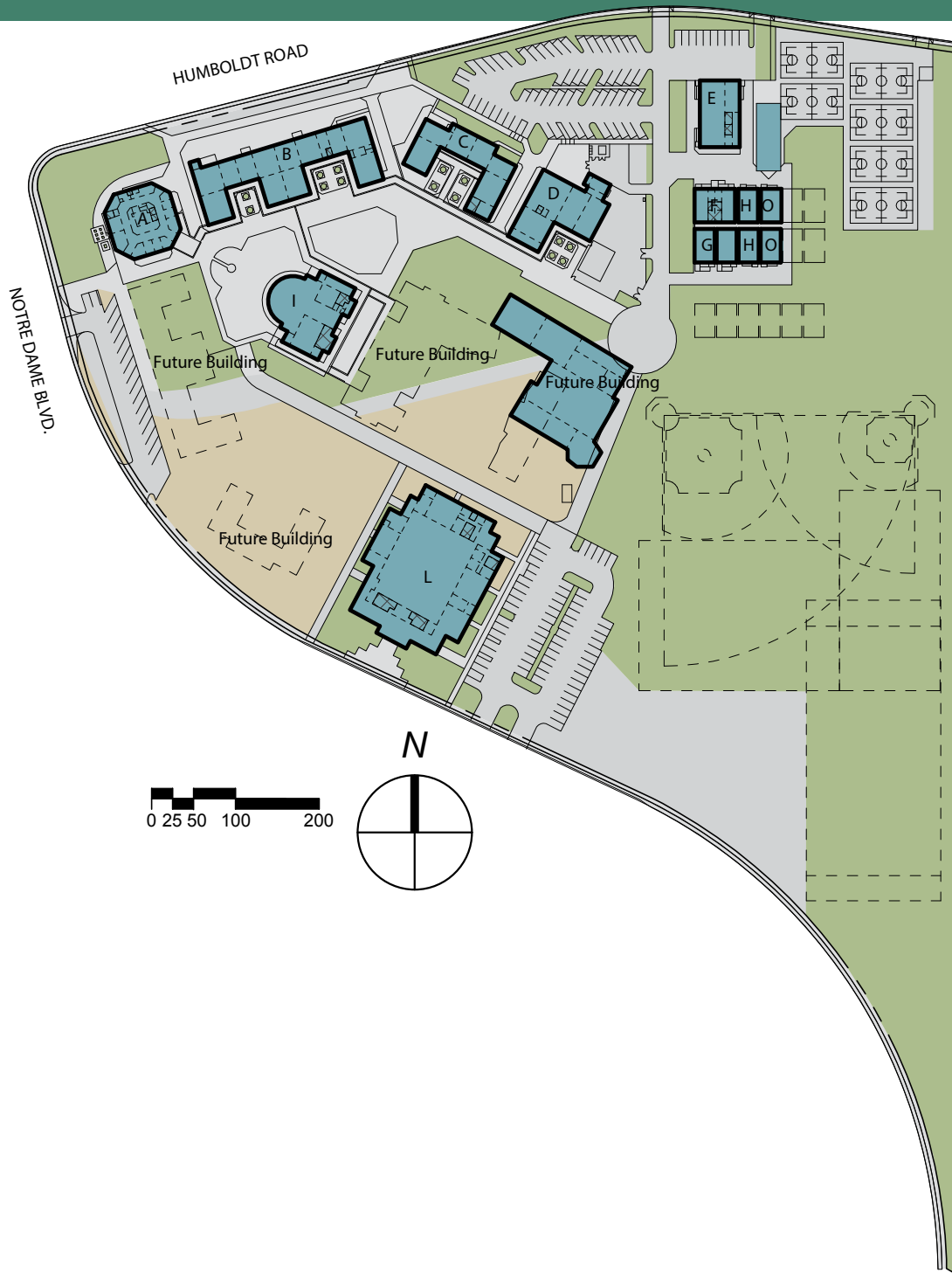
PE			
Gym	Ceilings	3	mtl
Gym	Walls	3	blk
Gym	Floors	3	wd
Gym	Plumbing Fixtures	3	
Gym	HVAC	3	
Gym	Lighting	3	
Gym	Sound System	3	
Stands/ Bleachers	Condition	3	
Gym	ADA	1	
Stands	ADA	1	
Locker rooms	Ceilings	3	gwb
Locker rooms	Walls	3	
Locker rooms	Floors	3	conc
Locker rooms	Plumbing Fixtures	3	
Locker rooms	HVAC	2	
Locker rooms	Lighting	1	
Locker rooms	ADA	2	
Small Gym	Ceilings	n	
Small Gym	Walls	n	
Small Gym	Floors	n	
Small Gym	Plumbing Fixtures	n	
Small Gym	HVAC	n	
Small Gym	Lighting	n	
Small Gym	Sound System	n	
Stands/ Bleachers	Condition	n	
Small Gym	ADA	n	
Stands	ADA	n	
Dance/Fitness	Ceilings	n	
Dance/Fitness	Walls	n	
Dance/Fitness	Floors	n	
Dance/Fitness	Plumbing Fixtures	n	
Dance/Fitness	HVAC	n	
Dance/Fitness	Lighting	n	
Dance/Fitness	Sound System	n	
Dance/Fitness	ADA	n	
PE Office	Ceilings	3	toilet room
PE Office	Walls	2	
PE Office	Floors	2	
PE Office	Plumbing Fixtures	3	
PE Office	HVAC	3	
PE Office	Lighting	3	
PE Office	ADA	2	

General Classrooms - Jr./Sr. Building B		10	Qty.
Classroom	Ceilings	2	layin
Classroom	Walls	2	gwb
Classroom	Floors	2	
Classroom	HVAC	2	
Classroom	Lighting	3	
Classroom	Cabinets	2	
Classroom	ADA	2	
General Classrooms - Jr./Sr. Building C		6	Qty.
Classroom	Ceilings	2	relocatabels
Classroom	Walls	2	v
Classroom	Floors	2	vct
Classroom	HVAC	2	
Classroom	Lighting	2	
Classroom	Cabinets	2	
Classroom	ADA	2	
General Classrooms - Jr./Sr. Building G, H & O		5	Qty.
Classroom	Ceilings	1	portable, lots of storage
Classroom	Walls	2	
Classroom	Floors	1	vct
Classroom	HVAC	1	
Classroom	Lighting	1	
Classroom	Cabinets	2	
Classroom	ADA	1	
Special Education Learning Spaces - Severe Needs			
Classroom	Ceilings	2	cl rm not set up
Classroom	Walls	2	
Classroom	Floors	3	
Classroom	Plumbing Fixtures	2	
Classroom	HVAC	2	
Classroom	Lighting	2	
Classroom	Sound System	1	
Classroom	Cabinets	2	
Classroom	ADA	2	
Restrooms	Ceilings	n	
Restrooms	Walls	n	
Restrooms	Floors	n	
Restrooms	Plumbing Fixtures	n	
Restrooms	HVAC	n	
Restrooms	Lighting	n	
Restrooms	ADA	1	

Library/ Media Center			
Library/ Media Centre	Ceilings	3	
Library/ Media Centre	Walls	2	
Library/ Media Centre	Floors	3	
Library/ Media Centre	Plumbing Fixtures	3	
Library/ Media Centre	HVAC	3	
Library/ Media Centre	Lighting	3	
Library/ Media Centre	Sound System	n	
Library/ Media Centre	Cabinets	2	
Library/ Media Centre	ADA	2	
Workroom	Ceilings	3	layin
Workroom	Walls	3	
Workroom	Floors	3	
Workroom	Plumbing Fixtures	3	
Workroom	HVAC	3	
Workroom	Lighting	3	
Workroom	ADA	3	
Classroom/Lab	Ceilings	3	
Classroom/Lab	Walls	3	
Classroom/Lab	Floors	3	
Classroom/Lab	Plumbing Fixtures	n	
Classroom/Lab	HVAC	3	
Classroom/Lab	Lighting	3	
Classroom/Lab	Sound System	n	
Classroom/Lab	Cabinets	2	
Classroom/Lab	ADA	2	
Music		1	Qty.
Classroom/Lab	Ceilings	3	
Classroom/Lab	Walls	3	
Classroom/Lab	Floors	2	
Classroom/Lab	HVAC	3	
Classroom/Lab	Lighting	3	
Classroom/Lab	Sound System	n	
Classroom/Lab	Cabinets	n	
Classroom/Lab	ADA	2	
Art		1	Qty.
Classroom/Lab	Ceilings	3	sloped 12x12
Classroom/Lab	Walls	3	
Classroom/Lab	Floors	3	
Classroom/Lab	Plumbing Fixtures	2	
Classroom/Lab	HVAC	2	
Classroom/Lab	Lighting	2	
Classroom/Lab	Cabinets	2	
Classroom/Lab	ADA	2	

Computer Technology Lab		0	Qty.
Applied Computing Lab - business, etc		0	Qty.
Science Rooms/ Labs		1	Qty.
Classroom/Lab	Ceilings	2	layin
Classroom/Lab	Walls	2	
Classroom/Lab	Floors	2	vct
Classroom/Lab	Plumbing Fixtures	2	sink
Classroom/Lab	HVAC	2	
Classroom/Lab	Lighting	3	
Classroom/Lab	Sound System	3	
Classroom/Lab	Cabinets	2	some
Classroom/Lab	Gas	2	
Classroom/Lab	ADA	2	
Vocational home ec		1	Qty.
Classroom/Lab	Ceilings	3	
Classroom/Lab	Walls	3	
Classroom/Lab	Floors	2	vct
Classroom/Lab	Plumbing Fixtures	3	
Classroom/Lab	HVAC	2	
Classroom/Lab	Lighting	2	
Classroom/Lab	Cabinets	3	
Classroom/Lab	Fixed Equipment	3	
Classroom/Lab	ADA	1	
Culinary Arts		0	Qty.
Classroom/Lab	Ceilings		see above
Classroom/Lab	Walls		
Classroom/Lab	Floors		
Classroom/Lab	Plumbing Fixtures		
Classroom/Lab	HVAC		
Classroom/Lab	Lighting		
Classroom/Lab	Cabinets		
Classroom/Lab	Fixed Equipment		
Classroom/Lab	ADA		

Building Exterior			
Building A	Roof	3	some movement in support bms
Building A	Walls	4	
Building A	Windows	4	
Building B & C	Roof	3	
Building B & C	Walls	4	
Building B & C	Windows	4	
Building D	Roof	2	
Building D	Walls	2	
Building D	Windows	2	
Building E	Roof	1	
Building E	Walls	1	
Building E	Windows	1	
Building F	Roof	1	
Building F	Walls	2	
Building F	Windows	2	
Building G	Roof	1	
Building G	Walls	2	
Building G	Windows	2	
Building H	Roof	2	
Building H	Walls	2	
Building H	Windows	2	
Building I	Roof	3	
Building I	Walls	4	
Building I	Windows	4	
Building J	Roof	n	
Building J	Walls	n	
Building J	Windows	n	
Building L	Roof	3	
Building L	Walls	4	
Building L	Windows	n	
Building O	Roof	2	
Building O	Walls	2	
Building O	Windows	2	
Site		43	
Building		42	
ADA		26	
Notes/ Other			
<i>clinic toilet floor. .bad</i>			
<i>portables not used, sixth grade, smells</i>			
<i>mech room transformer....</i>			



MARSH JUNIOR HIGH SCHOOL

2256 Humboldt Rd.
Chico, CA 95928

SCHOOL

- Teaching Stations 21

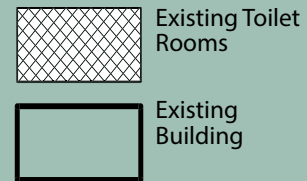
SITE

- Site Acreage 19.98

BUILDING

- Date of Original DSA Approval 1993; 2004

LEGEND



BUILDING DESIGNATIONS

- A Administration
- B Math
- C Social Science
- D Industrial Technology
- E Relocatable Multipurpose
- F Relocatable Classrooms
- G Relocatable Classrooms
- H Relocatable Classrooms
- I Library
- L Gym
- O Relocatable Classrooms

K12 Facilities Functional Assessment			
School name		Chico Sr.	
Principal		JIM HANLON	
School website		http://chs.chicousd.org	
Point of contact - email		Office Manager Robin Carriere	
Point of contact - phone			
Address		Enrollment	
901 Esplanade		1806	
Score Summary			
Building Score		61	
Capacity		68	
Adjacency		71	
Function / Amenities		72	
Ed Building Score		70	
Condition Building Score		52	
Site Score		54	
Ed Site Score		66	
Condition Site Score		42	
Technology Score		56	
Accessibility Score		33	

K12 Facilities Functional Assessment - EDUCATION / TECHNOLOGY			
Assessor:		Score	Comments
Site			
Site Parking			
Staff parking - capacity		3	
Staff parking - location		4	
Visitor parking - capacity		3	
Visitor parking - location		4	
Student parking - capacity		4	
Student parking - location		4	
Vehicle Traffic Flows/ Roads			
Traffic approach		n	under construction
Traffic routes		n	
Traffic circulation		n	
Sep. - staff/parents vehicle		n	
Sep. - delivery vehicles		n	
Separation - school bus		n	
Pedestrian Traffic Flows			
Separation - vehicles		n	no coverage
Covered walkways		4	
students bus lines		2	
students parent lines		2	
Internal building circulation		4	
Outdoor Playing Fields/ Courts/ Physical Education			
Track		3	use one at Chico Jr. Pool does not have all program requirements Use PV but does not meet all prgram requirements not able to get 3 under construction no snack bar or team rooms split by inspire from the rest of the campus
Field - Aquatics		1	
Field - Stadium		1	
Field - Rectangle		2	
Field - Baseball		4	
Field - Softball		4	
Courts - Tennis		4	
Courts - Basketball		4	
Rest Rooms		4	
Amenities		1	
Location of fields/courts		2	
Playing field storage		3	

Site Security			
Fencing		n	4
External Lighting			
Controlled access			4
Blind spots			4
Camera & Video		n	3 not in fields
PA system - all areas			
Emergency vehicle access			4
School Environment			
Functional/ logical layout			3 inspire bysects the campus
"Curb Appeal"			4
Compliance			
Equity in sport complianc	Ref: Title 9	n	
Drinking Fountains	Ref: Title 5	n	
Bathrooms	Ref: Title 5	n	
IT Environment			
Sufficient power outlets		n	
Sufficient data outlets			
Server/ switch rooms			2
Power Backups		n	2
Sufficient projectors		n	
Sufficient smart boards		n	
Wireless LAN coverage			2
"Cable" LAN coverage			2
Download speed test			4
Upload speed test			2

Buildings			
Restrooms			
Restrooms (staff) - size		2	
Restrooms (staff) - location		2	
Restrooms (Student)- size	ES - 1 per 35. MS/HS 1 per 45	4	
Restrooms (Student) - locn.		4	
School Administrative Areas			
Front office - size		3	small for size of campus
Front office - location		4	off front parking
Front office - Functionality		1	disconnected services, difficult to navigate and suppurvise
Principal's office - size		4	
Principal's office - location		4	
Asst Principal's office - size		2	small and no back door
Asst Principal's office - locn.		4	
Clinic - size		2	fine size in total but split into small rooms
Clinic - location		4	
Clinic - cold storage		4	
Clinic - storage		4	
Teachers Lounge - size		3	
Teachers Lounge - location		4	
Teachers Lounge - functionality		4	
Counseling - size		2	two smaller than others
Counseling - Adjacency		4	
Counseling - Functionality		3	not a good waiting area that can be confidial
Custodial - size		3	
Custodial - location		3	
Custodial - storage		3	
Lighting - ALL	n		
Data - Cable/Wireless - ALL		2	
Power outlets - ALL	n		
Cafeteria - Eating area			
Eating area - size		4	
Eating area - adjacency		4	
Eating area - layout		4	
Eating area - storage		4	

Kitchen - Food Prep			
Kitchen - size		4	
Kitchen - layout		4	
Kitchen - storage		4	
Kitchen - fixed equipment		4	
Auditorium/ Performing Arts			
Auditorium - size		4	
Auditorium - adjacency		2	hard to find from parking
Auditorium - storage		2	limited
Auditorium - layout		2	no back stage
Auditorium - lighting		4	
Auditorium sound system		4	
Auditorium - dressing rooms		3	behind audience
Data - Cable/Wireless		2	
Power outlets		n	
PE			
Courts - type and number		4	
Stands/ Bleachers		4	
Gym Lighting		4	
Storage		2	some of the new small gym but none adjacent to the main gym
Locker rooms - size		3	873 boys, 638 girls, 756 of boys are the small with matching large
Locker rooms - location		4	
Locker rooms - function		3	boys have broken lockers and a little difficult to supervise
PE Office - size		3	
PE Office - location		3	
PE Office - storage		3	
Arobics-Size	<i>not less than 2000 sq. ft.</i>	4	New Fitness Lab
Arobics-Equipment/Finish		4	New Fitness Lab
Arobics-Location		4	New Fitness Lab
Weight-Size	<i>not less than 2000 sq. ft.</i>	2	small for a class to use
Weight-Equipment/Finish		4	
Weight-Location		4	
Fitness-Size	<i>not less than 2000 sq. ft.</i>	4	Old dance room now Spin class
Fitness-Equipment/Finish		4	Old dance room now Spin class
Fitness-Location		4	Old dance room now Spin class
Lighting - ALL		4	
Data - Cable/Wireless - ALL		2	missing in weight room, limited eleswhere
Power outlets - ALL		3	

General Classrooms - Jr./Sr. Building A, B & C		24	Qty.
Size	960 sq ft.	2	low 800
Storage		4	
Fixed equipment		n	
Lighting		3	limited natrual light
Data - Cable/Wireless		2	
Power outlets		4	
General Classrooms - Jr./Sr. Building J & K		14	Qty.
Size	960 sq ft.	4	
Storage		4	
Fixed equipment		n	
Lighting		3	glare is difficult and no shades do not work well for code reds
Data - Cable/Wireless		2	4 di
Power outlets		4	10 di total in cobo of 2 & 4
General Classrooms - Jr./Sr. Building H & IT		4	Qty.
Size	960 sq ft.	4	
Storage		4	
Fixed equipment		n	
Lighting		4	
Data - Cable/Wireless		2	
Power outlets		4	
Interventions / Resource / Alternative Learning Space		4	Qty.
Size	not less than 200 sq. ft.	2	low 800
Quantity		4	
Adjacency		4	
layout		3	"movable" walls are not used
Storage		3	rooms need to hold all grade levels and sometimes several subjects
Fixed equipment		1	no sink
Lighting		3	limited natrual light
Data - Cable/Wireless		2	varies depending on wall layout
Power outlets		3	varies depending on wall layout

Special Education Learning Spaces		1	Qty.
Size	<i>not less than 200 sq. ft.</i>		5 vocational shop space
Quantity			4
Adjacency			4
layout			4
Storage			4
Fixed equipment			4
Lighting			4
Data - Cable/Wireless			2
Power outlets			4
Special Education Learning Spaces - Severe Needs		5	Qty.
Size			2 in new building are good, 3 classes in the C building are small
Quantity			4
Adjacency			4
layout			3 limited by size in C building
Storage			4
Fixed equipment			3 not all rooms have sinks
Changing facilities			4
Attached bathroom			4
Kitchenette			4
Lighting			3 limited controls in C building
Data - Cable/Wireless			2
Power outlets			4
Library/ Media Centre			
Size			4
Adjacency			3 should have a computer lab adjacent
layout			2 difficult for presentations
Front desk			4
Media area			2 limited computers, one stuck into bookshelves
Collection area			4
Classroom/Lab	n		
Office	n		
Storage			4
Fixed equipment			4 in workroom
Lighting			2 limited natural light
Data - Cable/Wireless			2
Power outlets			3

Music - Building D		2	Qty.
Size		4	
Quantity		4	
Adjacency		4	
layout		4	
Storage		4	
Fixed equipment		4	
Rehearsal/practice spaces	not less than 50 sq. ft.	4	
Lighting		4	
Data - Cable/Wireless	n		
Power outlets	n		

Art - Building F		5	Qty.
Size		3	one is a little small could be better
Quantity		4	
Adjacency		4	
layout		4	
Storage		4	
Fixed equipment		4	
External access		4	
Natural light		3	
Lighting		4	
Data - Cable/Wireless		2	
Power outlets		4	
Computer Technology Lab		4	Qty.
Size	1300 sq ft. 960 sq ft. storage	4	drop in lab should be closer to library
Quantity		4	
Adjacency		3	
layout		4	
Storage		4	
Fixed equipment		4	
Lighting		4	
Data - Cable/Wireless		2	
Power outlets		4	
Science Rooms/ Labs - Buidling S & K		8	Qty.
Size	1300 sq ft.	4	three are in the new building great workroom space
Quantity		4	
Adjacency		3	
layout		4	
Storage		4	
Fixed equipment		4	
Safety		4	
Lighting		4	
Data - Cable/Wireless		2	
Power outlets		4	
CTE - Building IT		3	Qty.
Size	1300 sq ft.	4	
Quantity		4	
Adjacency		4	
layout	n		
Storage	n		
Fixed equipment		4	
Safety	n		
Lighting		4	
Data - Cable/Wireless		2	
Power outlets		4	

Vocational areas - Building AG		2	Qty.
Size	1300 sq ft.	4	
Quantity		4	
Adjacency		4	
layout		4	
Storage		4	
Fixed equipment		4	
Safety		4	
Lighting		4	
Data - Cable/Wireless		2	
Power outlets		4	
Fashion - Building H			
Size		4	odd cobination of uses in this building ok amount but odd placement in side room difficult for sewing machines
Adjacency		2	
layout		3	
Storage		3	
Safety		n	
Lighting		4	
Fixed equipment		4	
Power outlets		2	
Data - Cable/Wireless		2	
Capacity		68	
Adjacency		71	
Function / Amenities		72	
Site		66	
Technology		56	
Notes/ Other			

K12 Facilities Functional Assessment - CONDITION			
Assessor: Tim Haley		Score	Comments
Site Section			
Code & Local Environment			
Asbestos		0	Floors and insulation
Lead Paint		1	suspected in old parts
Access to Utilities		1	not all discoverable
Drainage		2	
Cooling - Local or Central		2	
Heating - Local or Central		2	
Site Parking			
Site Parking	Paving	3	
Site Parking	Landscape	3	
ADA Access		1	
Vehicle Traffic Flows/ Roads			
Traffic approach		3	
Traffic circulation		3	
ADA Access		1	
Pedestrian Traffic Flows			
Covered walkways		2	not all areas covered
Pedestrian Sidewalks		3	
Pedestrian Areas - Quads		4	
Landscaping		3	
ADA Access		3	when new Lincoln hall complete
Outdoor Playing Fields/ Courts/ Physical Education			
Track		3	
Field - Football		3	
Field - Soccer		3	
Field - Baseball		3	
Field - Softball		3	
Courts - Tennis		3	
Courts - Basketball		2	
Stands / Amenities		0	
Playing field storage		1	
Fields	ADA	1	
Stands	ADA	1	

Site Security			
Fencing		2	
External Lighting		1	
Controlled access		1	
Camera & Video		1	
Burglar alarms		1	
PA system - all areas		3	
Phone system - inst. Spaces		3	
Fire Sprinklers		2	New construction yes, old no
Emergency vehicle access		3	When new Lincoln Hall complete

Facilities Section			
Restrooms			
Restrooms (staff)	Ceilings	2	
Restrooms (staff)	Walls	1 ct	
Restrooms (staff)	Floors	1 ct	
Restrooms (staff)	Plumbing Fixtures	2	
Restrooms (staff)	HVAC	2	
Restrooms (staff)	Lighting	2	
Restrooms (staff)	ADA	1	
Restrooms (Student)	Ceilings	1	2 floor
Restrooms (Student)	Walls	1	
Restrooms (Student)	Floors	1	
Restrooms (Student)	Plumbing Fixtures	1	
Restrooms (Student)	HVAC	1	
Restrooms (Student)	Lighting	1	
Restrooms (Student)	ADA	1	
Drinking fountains		1	
Drinking fountains	ADA	1	

School Administrative Areas			
Front office	Ceilings	1	layin
Front office	Walls	2	brick and gwb
Front office	Floors	2	vct
Front office	Plumbing Fixtures	n	
Front office	HVAC	2	
Front office	Lighting	2	
Front office	ADA	1	
Principal's office	Ceilings	3	12x12
Principal's office	Walls	2	
Principal's office	Floors	3	cpt
Principal's office	Plumbing Fixtures	n	
Principal's office	HVAC	3	
Principal's office	Lighting	2	
Asst Principal's office	Ceilings	2	3 offices
Asst Principal's office	Walls	2	
Asst Principal's office	Floors	2	
Asst Principal's office	Plumbing Fixtures	n	
Asst Principal's office	HVAC	3	
Asst Principal's office	Lighting	2	
Clinic	Ceilings	2	12x12
Clinic	Walls	2	
Clinic	Floors	2	
Clinic	Plumbing Fixtures	2	2 toilets and sinks
Clinic	HVAC	3	
Clinic	Lighting	3	
Clinic	Cabinets	2	
Clinic	ADA	1	
Teachers Lounge	Ceilings	2	
Teachers Lounge	Walls	2	
Teachers Lounge	Floors	1	vct cpt
Teachers Lounge	Plumbing Fixtures	2	sink
Teachers Lounge	HVAC	3	
Teachers Lounge	Lighting	1	
Teachers Lounge	Cabinets	2	
Teachers Lounge	ADA	2	

Counseling	Ceilings	1	layin, stains
Counseling	Walls	2	
Counseling	Floors	2	cpt
Counseling	Plumbing Fixtures	n	
Counseling	HVAC	3	
Counseling	Lighting	2	
Counseling	ADA	1	
Custodial	Ceilings	2	
Custodial	Walls	1	
Custodial	Floors	2	
Custodial	Plumbing Fixtures	2	
Custodial	HVAC	1	
Custodial	Lighting	2	

Cafeteria			
Dining Area	Ceilings	4	New Lincoln Hall
Dining Area	Walls	4	
Dining Area	Floors	4	
Dining Area	Plumbing Fixtures	4	
Dining Area	HVAC	4	
Dining Area	Lighting	4	
Dining Area	Sound System	4	
Dining Area	ADA	4	
Stage	Ceilings	n	
Stage	Walls	n	
Stage	Floors	n	
Stage	Plumbing Fixtures	n	
Stage	HVAC	n	
Stage	Lighting	n	
Stage	ADA	n	
Kitchen	Ceilings	4	
Kitchen	Walls	4	
Kitchen	Floors	4	
Kitchen	Plumbing Fixtures	4	
Kitchen	HVAC	4	
Kitchen	Lighting	4	
Kitchen	ADA	4	
Servery	Ceilings	4	
Servery	Walls	4	
Servery	Floors	4	
Servery	Plumbing Fixtures	4	
Servery	HVAC	4	
Servery	Lighting	4	
Servery	ADA	4	
Auditorium/ Performing Arts			
Auditorium	Ceilings	2	Behind Library
Auditorium	Walls	3	
Auditorium	Floors	3	
Auditorium	Plumbing Fixtures	n	
Auditorium	HVAC	2	
Auditorium	Lighting	3	
Auditorium	Sound System	3	
Auditorium	ADA	1	

PE			
Gym	Ceilings	3	Need new
Gym	Walls	3	
Gym	Floors	1	
Gym	Plumbing Fixtures	n	
Gym	HVAC	2	
Gym	Lighting	2	
Gym	Sound System	3	
Stands/ Bleachers	Condition	4	
Gym	ADA	2	
Stands	ADA	3	
Locker rooms	Ceilings	1	
Locker rooms	Walls	2	
Locker rooms	Floors	2	
Locker rooms	Plumbing Fixtures	n	
Locker rooms	HVAC	2	
Locker rooms	Lighting	2	
Locker rooms	ADA	1	
Small Gym	Ceilings	4	New Lincoln Hall
Small Gym	Walls	4	
Small Gym	Floors	4	
Small Gym	Plumbing Fixtures	4	
Small Gym	HVAC	4	
Small Gym	Lighting	4	
Small Gym	Sound System	4	
Stands/ Bleachers	Condition	4	
Small Gym	ADA	4	
Stands	ADA	4	
Dance/Fitness	Ceilings	4	New Fitness Center
Dance/Fitness	Walls	4	
Dance/Fitness	Floors	4	
Dance/Fitness	Plumbing Fixtures	4	
Dance/Fitness	HVAC	4	
Dance/Fitness	Lighting	4	
Dance/Fitness	Sound System	4	
Dance/Fitness	ADA	4	
PE Office	Ceilings	2	Shower and Toliet, seldom used
PE Office	Walls	1	
PE Office	Floors	2	
PE Office	Plumbing Fixtures	2	
PE Office	HVAC	2	
PE Office	Lighting	2	
PE Office	ADA	1	

General Classrooms - Jr. & Sr. High Building A, B & C		37	Qty.
Classroom	Ceilings	1	two story
Classroom	Walls	2	brick, plaster
Classroom	Floors	3	vct
Classroom	HVAC	3	
Classroom	Lighting	2	
Classroom	Cabinets	2	
Classroom	ADA	1	
General Classrooms - Jr. & Sr. High Building J & K		18	Qty.
Classroom	Ceilings	4	
Classroom	Walls	4	
Classroom	Floors	4	
Classroom	HVAC	4	
Classroom	Lighting	4	
Classroom	Cabinets	4	
Classroom	ADA	4	
Special Education Learning Spaces - Severe Needs			
Restrooms	Ceilings	4	
Restrooms	Walls	4	
Restrooms	Floors	4	
Restrooms	Plumbing Fixtures	4	
Restrooms	HVAC	4	
Restrooms	Lighting	4	
Restrooms	ADA	4	

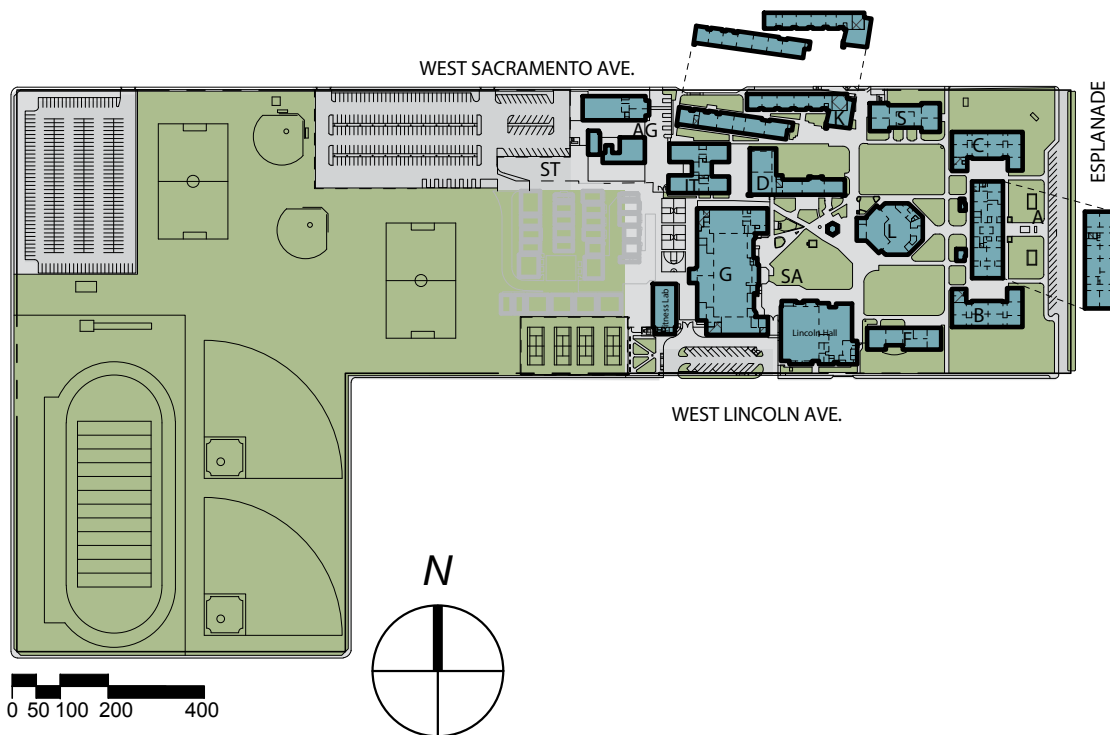
Library/ Media Centre			
Library/ Media Centre	Ceilings	2	varies
Library/ Media Centre	Walls	2	
Library/ Media Centre	Floors	2	cpt
Library/ Media Centre	Plumbing Fixtures	1	
Library/ Media Centre	HVAC	2	
Library/ Media Centre	Lighting	2	
Library/ Media Centre	Sound System	2	
Library/ Media Centre	Cabinets	2	
Library/ Media Centre	ADA	1	
Workroom	Ceilings	2	
Workroom	Walls	2	
Workroom	Floors	2	cpt
Workroom	Plumbing Fixtures	1	bad access toilets
Workroom	HVAC	2	
Workroom	Lighting	2	
Workroom	ADA	2	
Classroom/Lab	Ceilings	n	incoperated in lib
Classroom/Lab	Walls	n	
Classroom/Lab	Floors	n	
Classroom/Lab	Plumbing Fixtures	n	
Classroom/Lab	HVAC	n	
Classroom/Lab	Lighting	n	
Classroom/Lab	Sound System	n	
Classroom/Lab	Cabinets	n	
Classroom/Lab	ADA		

Music - Building D		2	Qty.
Classroom/Lab	Ceilings	3	
Classroom/Lab	Walls	2	
Classroom/Lab	Floors	2	
Classroom/Lab	HVAC	2	
Classroom/Lab	Lighting	2	
Classroom/Lab	Sound System	3	
Classroom/Lab	Cabinets	3	
Classroom/Lab	ADA	2	
Art - Buidling F		5	Qty.
Classroom/Lab	Ceilings	1	
Classroom/Lab	Walls	2	
Classroom/Lab	Floors	3	
Classroom/Lab	Plumbing Fixtures	3	
Classroom/Lab	HVAC	2	
Classroom/Lab	Lighting	2	
Classroom/Lab	Cabinets	1	
Classroom/Lab	ADA	1	
Computer Technology Lab			
Classroom/Lab	Ceilings	2	
Classroom/Lab	Walls	2	
Classroom/Lab	Floors	3	
Classroom/Lab	HVAC	3	
Classroom/Lab	Lighting	2	
Classroom/Lab	Sound System	1	
Classroom/Lab	Cabinets	1	
Classroom/Lab	ADA	1	
Science Rooms/ Labs - Building S		5	Qty.
Classroom/Lab	Ceilings	2	mod
Classroom/Lab	Walls	2	
Classroom/Lab	Floors	2	
Classroom/Lab	Plumbing Fixtures	2	
Classroom/Lab	HVAC	2	
Classroom/Lab	Lighting	2	
Classroom/Lab	Sound System	2	
Classroom/Lab	Cabinets	2	
Classroom/Lab	Gas	2	
Classroom/Lab	ADA	2	

Science Rooms/ Labs - Building J & K		3	Qty.
Classroom/Lab	Ceilings	4	New Classroom Building
Classroom/Lab	Walls	4	
Classroom/Lab	Floors	3	
Classroom/Lab	Plumbing Fixtures	4	
Classroom/Lab	HVAC	4	
Classroom/Lab	Lighting	4	
Classroom/Lab	Sound System	4	
Classroom/Lab	Cabinets	4	
Classroom/Lab	Gas	4	
Classroom/Lab	ADA	4	
Vocational - Building IT		4	Qty.
Classroom/Lab	Ceilings	3	
Classroom/Lab	Walls	3	
Classroom/Lab	Floors	3	
Classroom/Lab	Plumbing Fixtures	3	
Classroom/Lab	HVAC	3	
Classroom/Lab	Lighting	3	
Classroom/Lab	Cabinets	3	
Classroom/Lab	Fixed Equipment	3	
Classroom/Lab	ADA	2	
Vocational - Building AG		3	Qty.
Classroom/Lab	Ceilings	3	wd
Classroom/Lab	Walls	2	
Classroom/Lab	Floors	3	
Classroom/Lab	Plumbing Fixtures	2	
Classroom/Lab	HVAC	2	
Classroom/Lab	Lighting	2	
Classroom/Lab	Cabinets	2	
Classroom/Lab	Fixed Equipment	3	
Classroom/Lab	ADA	2	

Culinary Arts - Building H			
Classroom/Lab	Ceilings	2	temporary cr
Classroom/Lab	Walls	2	
Classroom/Lab	Floors	2	
Classroom/Lab	Plumbing Fixtures	2	
Classroom/Lab	HVAC	1	
Classroom/Lab	Lighting	2	
Classroom/Lab	Cabinets	2	
Classroom/Lab	Fixed Equipment	2	
Classroom/Lab	ADA	2	

Building Exterior			
Building A, B & C	Roof	1	
Building A, B & C	Walls	2	News new water proofing and paint
Building A, B & C	Windows	1	Alum, Energy
Building F	Roof	1	
Building F	Walls	2	
Building F	Windows	1	
Building G	Roof	2	
Building G	Walls	2	
Building G	Windows	2	Few
Building D	Roof	2	
Building D	Walls	2	
Building D	Windows	2	
Building H	Roof	2	
Building H	Walls	2	
Building H	Windows	2	
Building L	Roof	1	
Building L	Walls	2	
Building L	Windows	2	Few
Building S	Roof	2	
Building S	Walls	2	
Building S	Windows	2	
Building J & K	Roof	4	
Building J & K	Walls	4	
Building J & K	Windows	4	
Building IT	Roof	2	
Building IT	Walls	2	
Building IT	Windows	2	
Building AG	Roof	2	
Building AG	Walls	2	
Building AG	Windows	2	
Site		42	
Building		52	
ADA		33	
Notes/ Other			



CHICO HIGH SCHOOL

901 The Esplanade
Chico, CA 95926

SCHOOL

- Teaching Stations 41

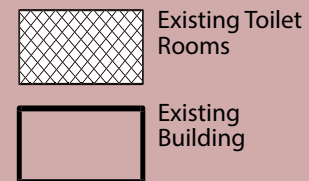
SITE

- Site Acreage 38.94

BUILDING

- Date of Original DSA Approval 1943; 2010

LEGEND



BUILDING DESIGNATIONS

A Administration & Classrooms
AG Classrooms (Agriculture)
B Classrooms
C Classrooms
D Classrooms (Music)
F Classrooms (Art)
G Gym & Locker Rooms
H Classrooms (Home Ec.)
IT Industrial Technology
J Classrooms
K Classrooms
L Library & Theater Classrooms
S Classrooms
SA Associated Students Building
ST Storage